



GAT MONTHLY MEMBERSHIP PROGRESS REPORT

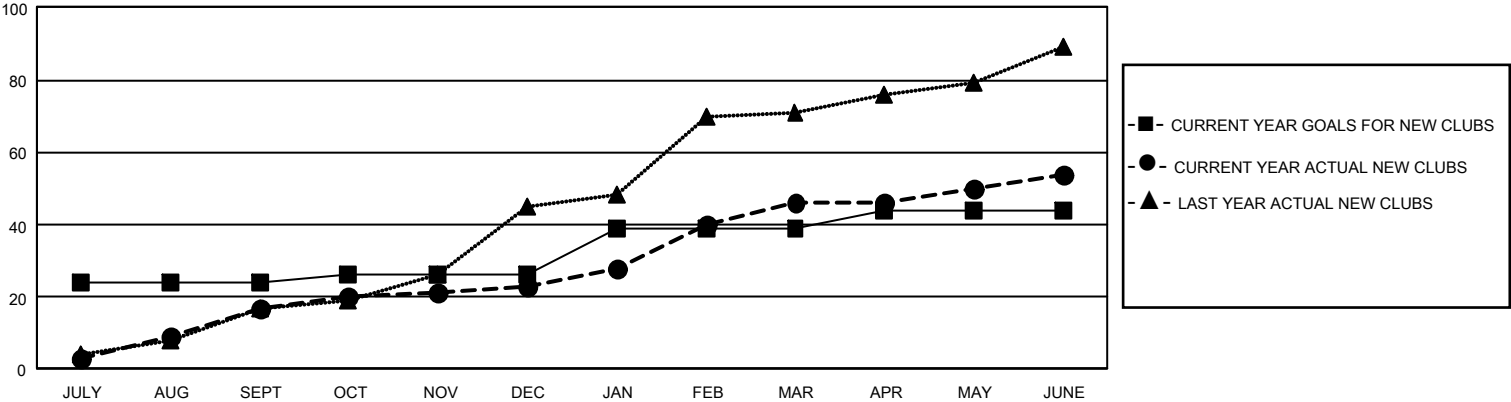
Results as of: 6/30/2025

GMT Constitutional Area 6 - I, Group H

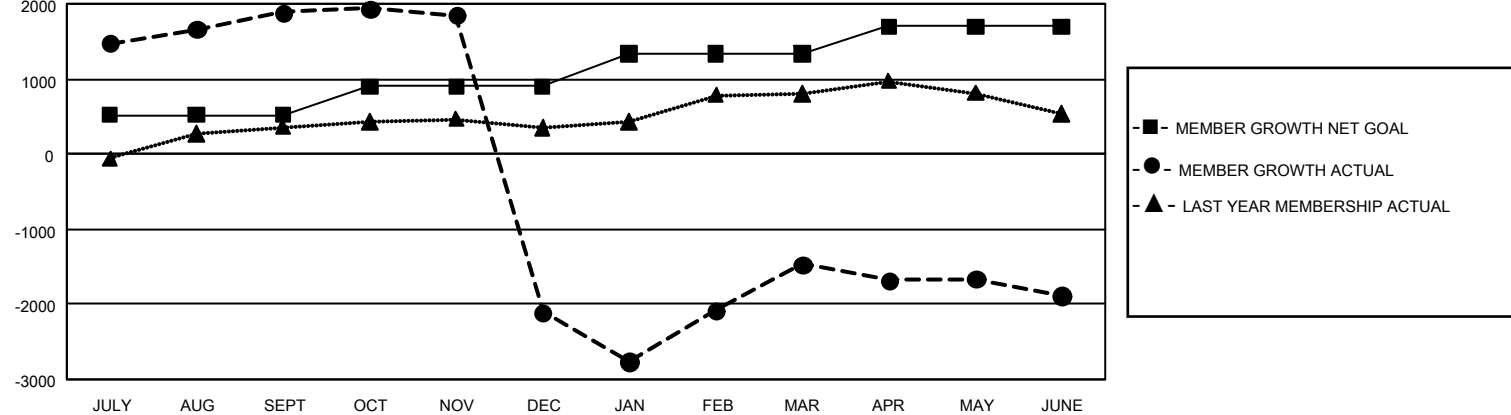
REPORT DOES NOT INCLUDE CLUBS IN UNDISTRICTED AREAS.

Clubs				Members			
RESULTS FOR 2024-2025				RESULTS FOR 2024-2025			
QUARTER	NEW CLUB GOAL	NEW CLUBS	DROPPED CLUBS	QUARTER	MEMBER GROWTH NET GOAL	MEMBER GROWTH ACTUAL	DROPPED MEMBERS ACTUAL (including transfers)
JULY/AUG/SEPT	72	17	5	JULY/AUG/SEPT	516	2,695	560
OCT/NOV/DEC	6	6	85	OCT/NOV/DEC	385	1,244	4,537
JAN/FEB/MAR	39	23	23	JAN/FEB/MAR	430	3,125	1,601
APR/MAY/JUNE	15	8	31	APR/MAY/JUNE	370	4,947	4,095

GOALS AND ACTUAL NEW CLUBS CUMULATIVE



GOALS AND ACTUAL MEMBERS CUMULATIVE



DROPPED CLUBS: 144		508 CLUBS OF 855 ADDED 1 OR MORE NEW MEMBERS	<u>GENDER DISTRIBUTION</u>	
<u>DROPPED MEMBERS</u>  DECEASED 105 CLUB CANCELLED 3,955 OTHER 6,678 <hr/> TOTAL 10,738			MALE	18,587 (62.14%)
			FEMALE	11,320 (37.84%)
			NON BINARY	0 (0.00%)
			PREFER NOT TO ANSWER	5 (0.02%)
		<a href="#">CLICK HERE FOR CUMULATIVE MEMBERSHIP DATA</a>	TOTAL FAMILY UNIT MEMBERS	14,654
			FAMILY MEMBERS PAYING HALF DUES	9,198